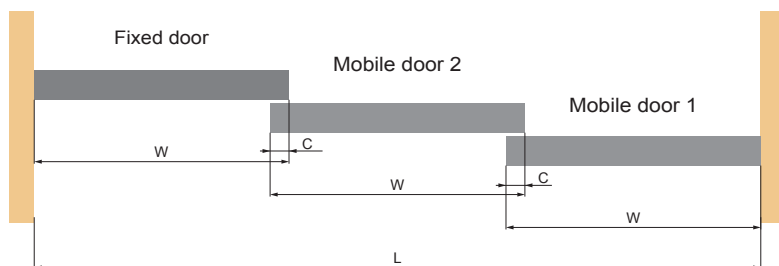
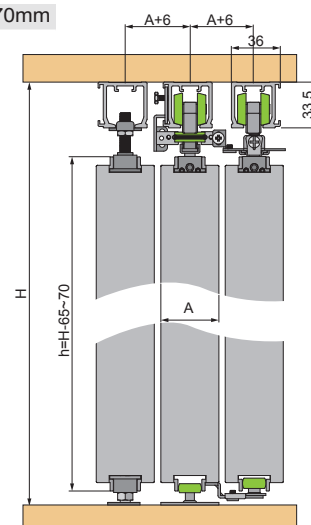


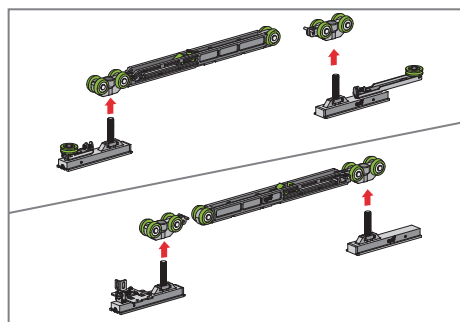
$$\text{Door Width}(W) = \frac{\text{door opening width}(L) + \text{Coincidence position}(C) \times 2}{3}$$



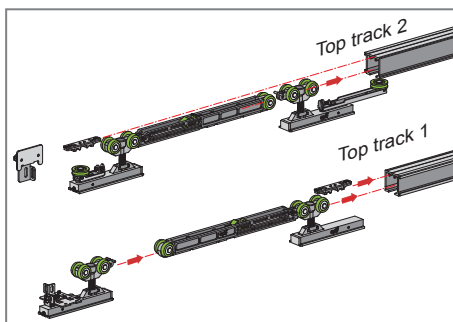
$$\text{Door height}(h) = H - 65 \sim 70 \text{mm}$$



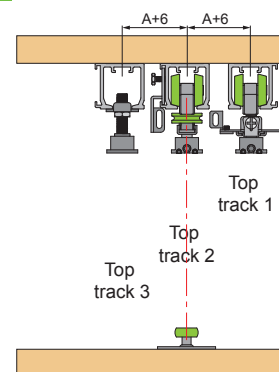
1 Install hanging box



2 Install top roller and stoppers

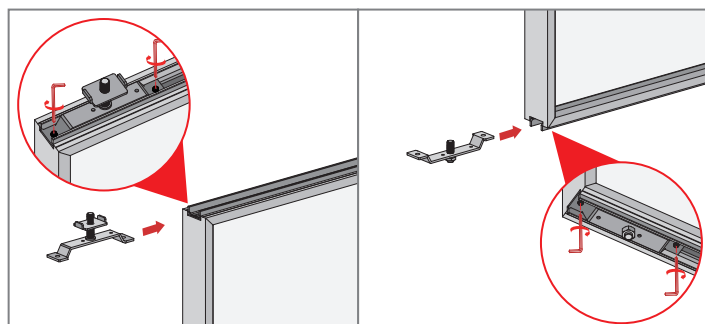


3 Install top track and bottom roller

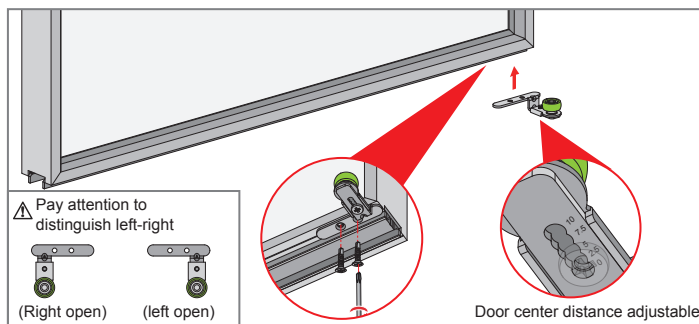


4 Install door accessories

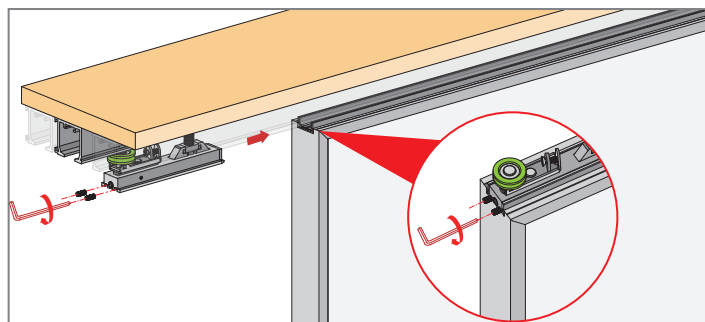
1 Install fixed door accessories



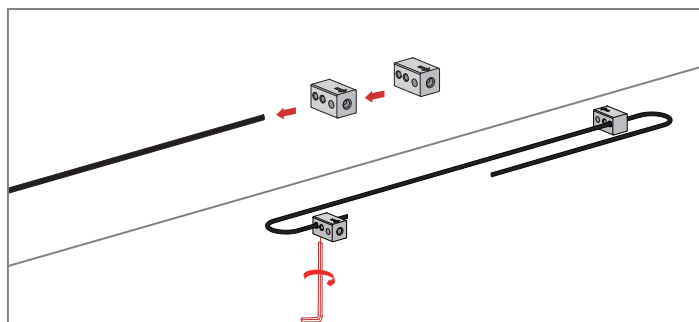
2 Install connection bottom roller to sliding door 2



5 Install sliding door 2 to top track



6 Install the wire connector and fix it

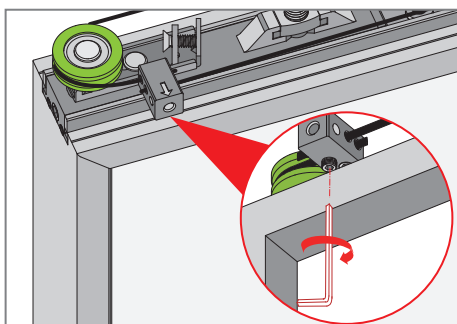


7 Wind the steel

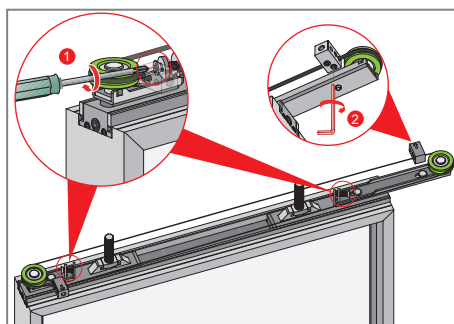
1 Push the wire connector to the diagram position



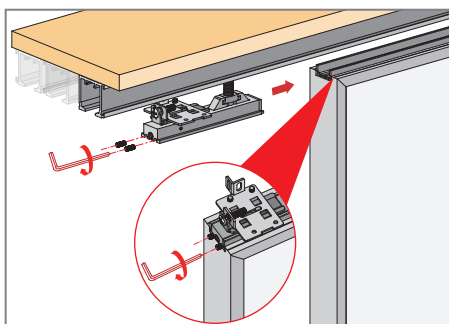
2 Tighten the wire and fix it



3 Adjust tightness of the wire to and fix it

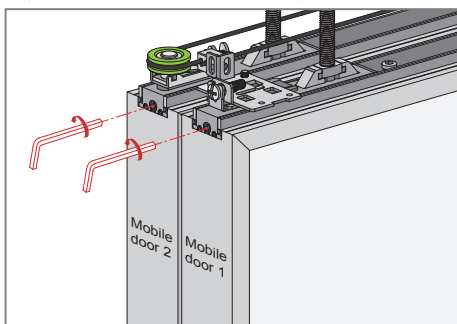


8 Install sliding door 1 to top track

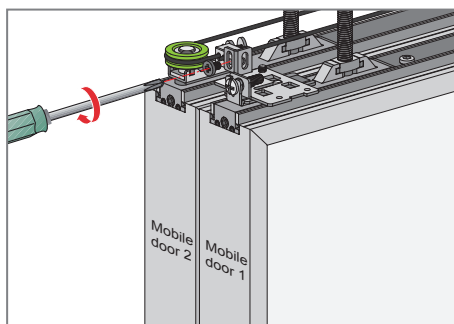


9 adjust the balance of door panel

Adjust the door panel by hex socket

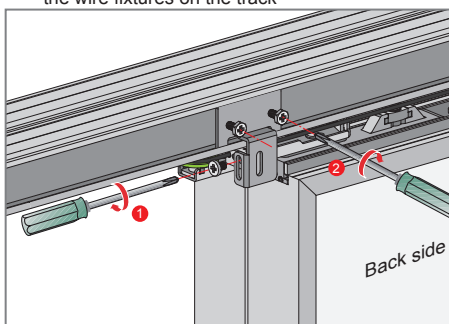


10 Fix wire connectors

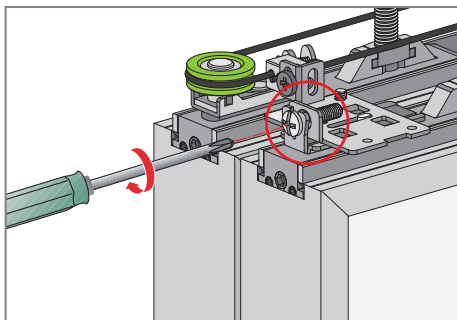


11 Fixed wire fixing parts

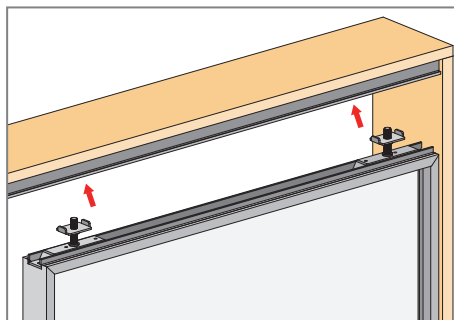
1 Push all the door panels to the end, fixing the wire fixtures on the track



2 If the door panel is not aligned, it can be fine-tuned with this screw



12 Install fixed door



13 Adjust fixed door balance

