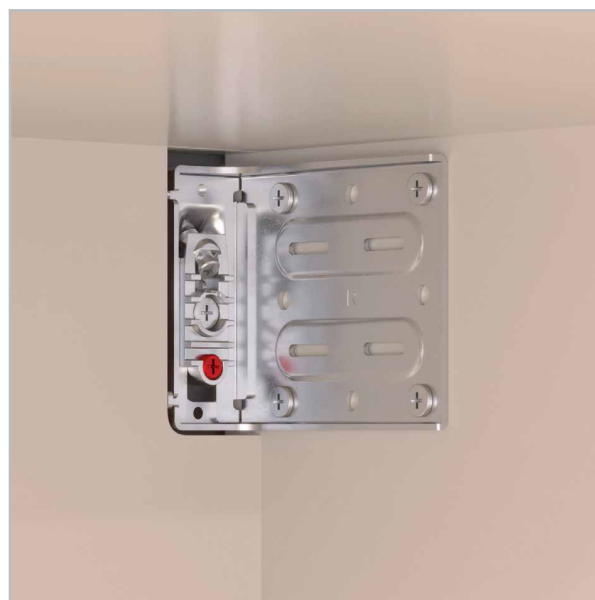
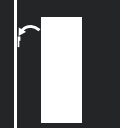


## LIBRA H11



HANGERS

**LIBRA H11***PATENTED*



## LIBRA H11

Suitable for suspended base units for all types of furniture.

Quick and easy installation through 4 holes to be pre-drilled on the side panel. Structural top and backside panel are not required.

Fixation on the side panel through M6 flat head screw or bespoke euro screw or, alternatively, simply slotting the hangers into the side holes with the version including pre-mounted bushes and screws.

Thanks to the slim side plate, it allows to fully and efficiently use the inner space.

Possibility to install it in pre-assembled cabinets.

Easy and intuitive installation and removal of the base unit.

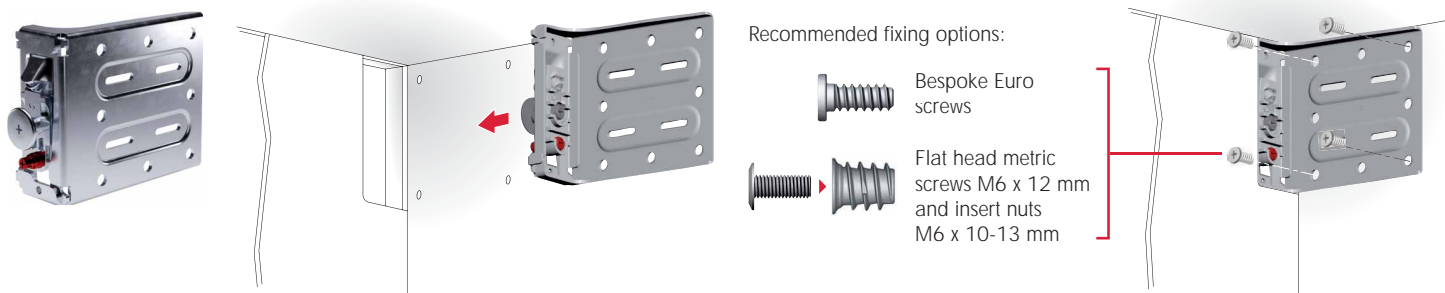
The adjustment body is easily accessible as the screwdriver works parallel to the side panel.

Patented anti-turnover device.

The integrated use of LIBRA WP13 is highly recommended.

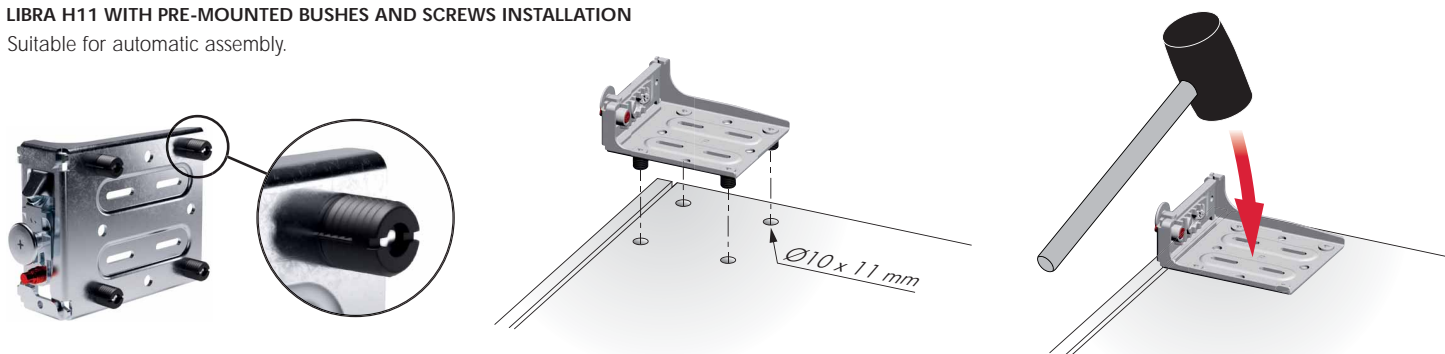


### LIBRA H11 SCREW FIXING INSTALLATION



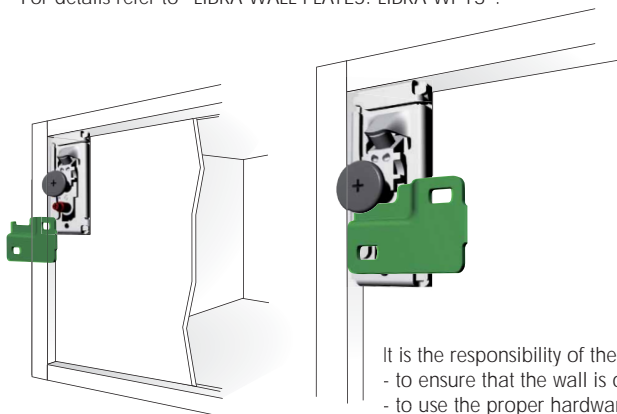
### LIBRA H11 WITH PRE-MOUNTED BUSHES AND SCREWS INSTALLATION

Suitable for automatic assembly.



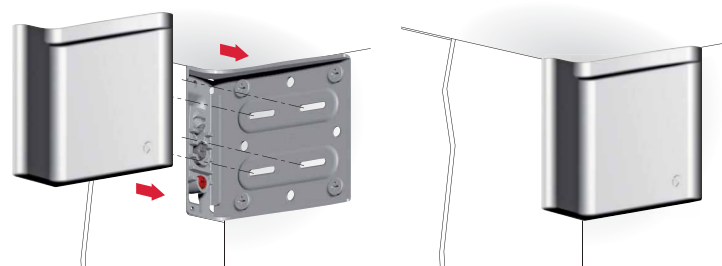
### INSTALLATION ON THE WALL

- For details refer to "LIBRA WALL PLATES: LIBRA WP13".



### OPTIONAL COVER CAP INSERTING

- For details refer to "LIBRA H11 ACCESSORIES".



It is the responsibility of the customer:

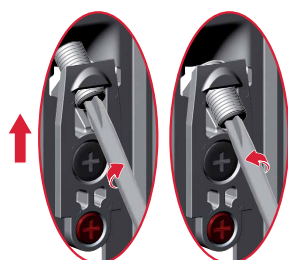
- to ensure that the wall is of a suitable quality to hold the unit fixing in place.
- to use the proper hardware fittings according to the construction of the wall.

For more specific information, please refer to the WARNINGS section at the end of the catalogue.

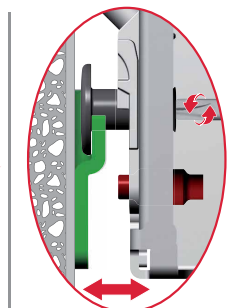
## ADJUSTMENTS



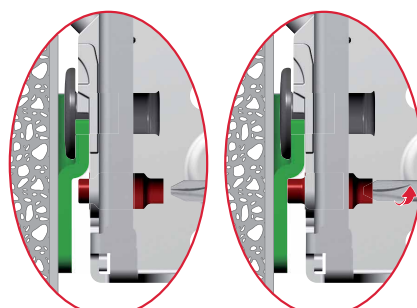
1  
VERTICAL ADJUSTMENT  
12 mm



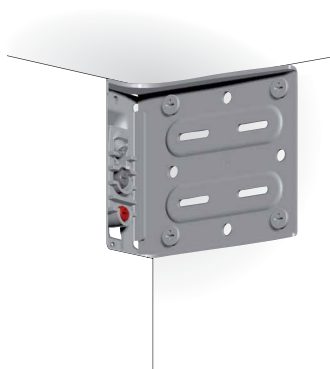
2  
IN-DEPTH ADJUSTMENT  
10 mm



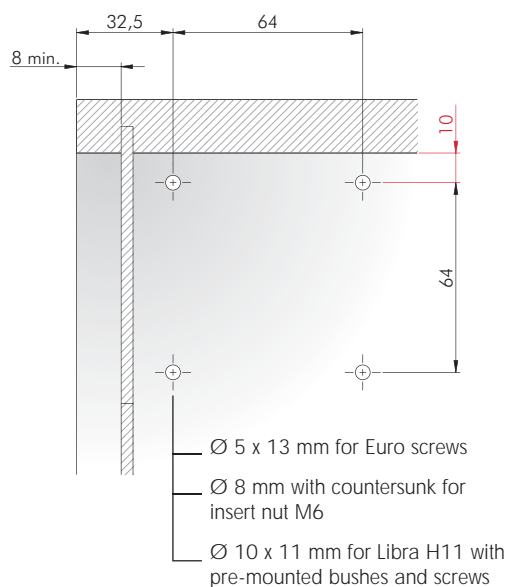
3  
ANTI-TURNOVER LOCKING  
Stop screwing the red bolt when  
it touches the wall plate



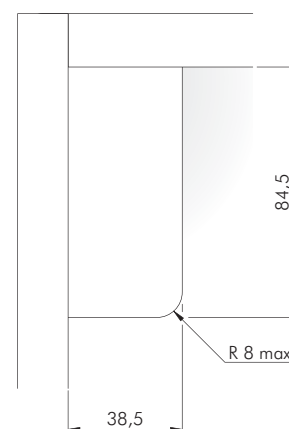
## DRILLING PLAN WITHOUT COVER CAP



Side panel and service gap



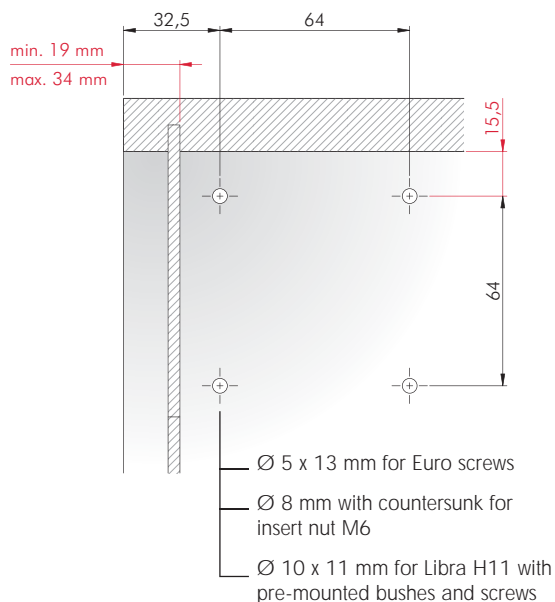
Back panel



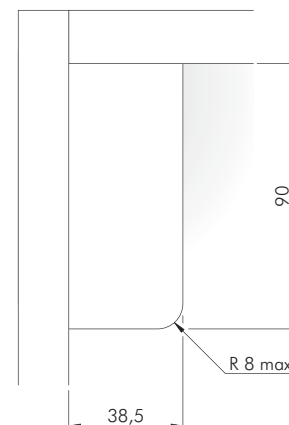
## DRILLING PLAN WITH COVER CAP



Side panel and service gap

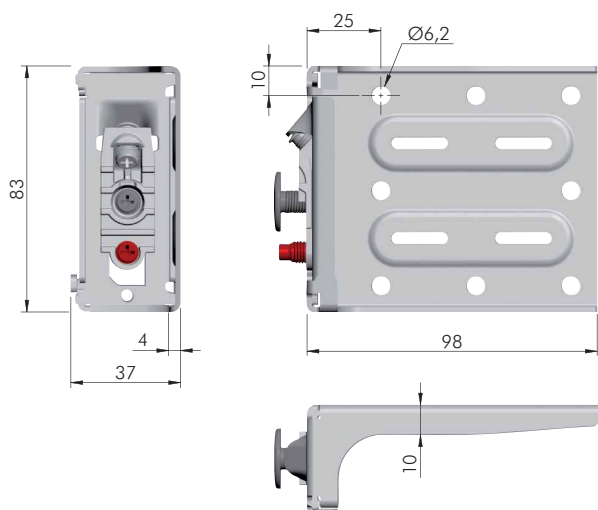


Back panel





## LIBRA H11 SCREW FIXING

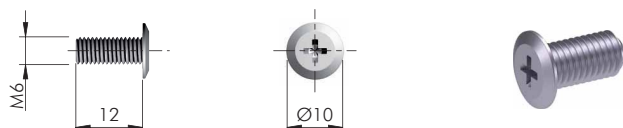


	= PZ2	
ST	ZA	= 50 pcs.
		<b>(R)</b>
63425025ZN		<b>(L)</b>
63425015ZN		

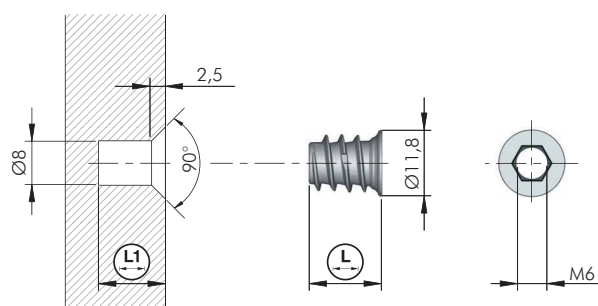
NOTE: for technical details about wall plates please refer to the related sections "LIBRA WALL PLATES" on page 12.64.



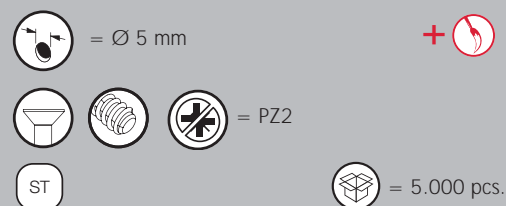
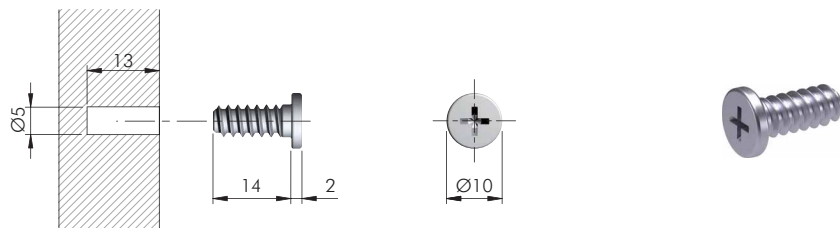
## LIBRA H11 SCREW FIXING ACCESSORIES



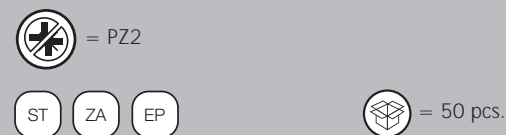
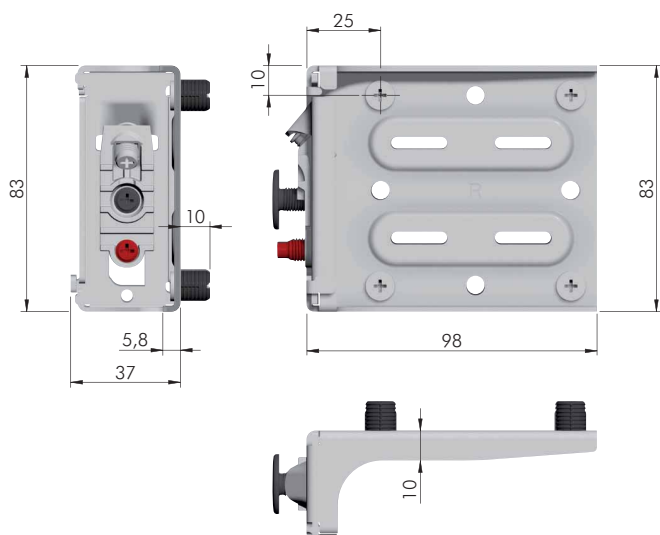
	= M6		= PZ2		= 5.000 pcs.
ST					
20819020ZN					



	= Ø 8 mm		= M6		
			= S6		
ZA					= 5.000 pcs.
		<b>(L)</b>	<b>(L1)</b>		
20102010GR		10	12		
20102020GR		13	15		



## LIBRA H11 WITH PRE-MOUNTED BUSHES AND SCREWS



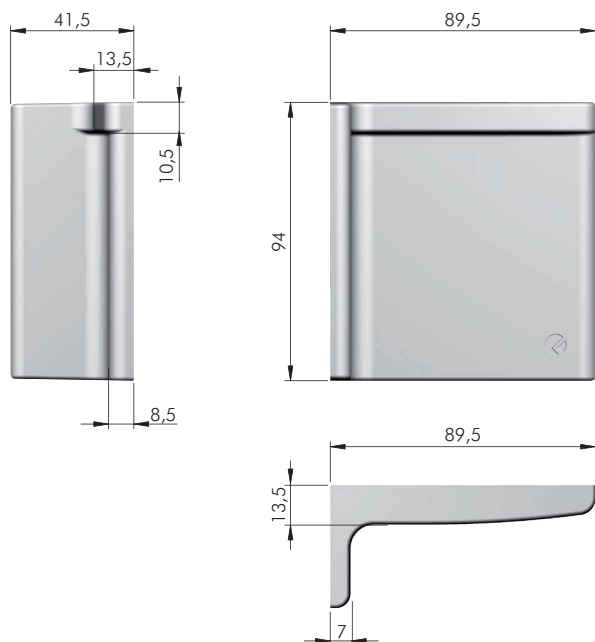
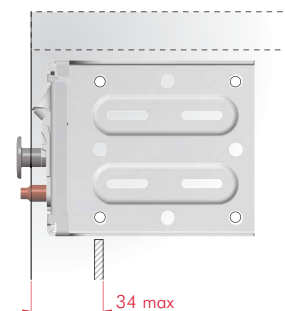
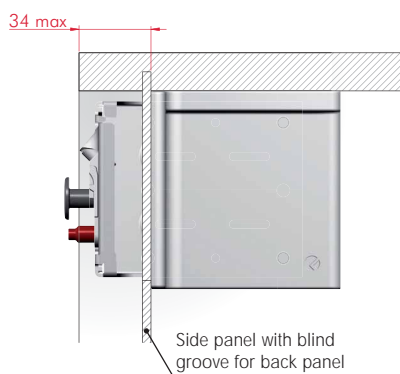
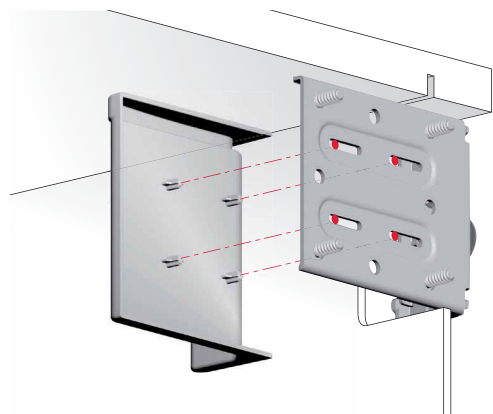
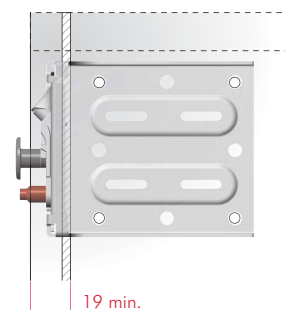
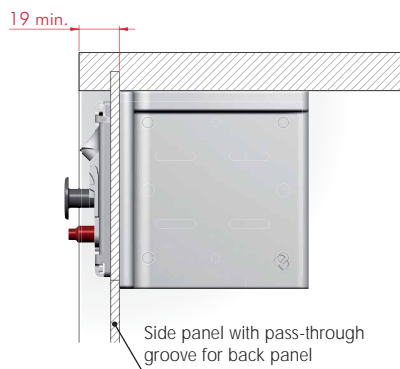
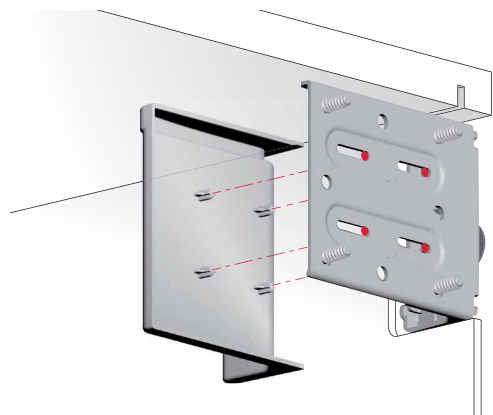
NOTE: for technical details about wall plates please refer to the related sections "LIBRA WALL PLATES" on page 12.64.





## LIBRA H11 COVER CAP

### INSTALLATION



EP		= 100 pcs.	
63490720AB	(R)		
63490710AB	(L)		
63490720EE	(R)		
63490710EE	(L)		
63490720IJ	(R)		
63490710IJ	(L)		

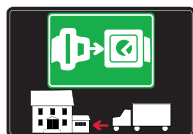






# SYMBOLS AND FINISHES LEGEND

## SYMBOLS



= SHELF SAFELY LOCKED DURING TRANSPORTATION AND AT HOME.



= ANTI-TURNOVER LOCKING SYSTEM



= NORMS / PATENTS



= PHILLIPS / POZIDRIV



= WITH BUFFER



= PART NO.



= BLADE SLOT



= WITH MAGNET



= PCS. PER PACKAGE



= COMBI SLOT



= HEXAGONAL SOCKET



= NEWTON



= CAPACITY LOADING



= HEXALOBULAR SOCKET



= FRICTION



= WOOD / GLASS THICKNESS



= COUNTERSUNK HEAD



= AUTOMATIC



= HOLE DIAMETER



= PAN HEAD



= DROP DOWN



= DIAMETER



= FLANGE HEAD



= LENGTH



= FLAT HEAD



= STANDARD HINGE



= HEIGHT



= TRILOBULAR SCREW



= KIMANA HINGE



= RIGHT VERSION



= SELF-TAPPING SCREW



= FLAP HINGE



= LEFT VERSION



= EURO THREAD



= WITH SPRING



= SETTING CODE



= METRIC THREAD



= WITHOUT SPRING



= PCS. PER PAD



= PRE-INSERTED SCREW



= REVERSED SPRING



= CUT ON REQUEST



= PRE-INSERTED SCREW AND SPREADING BUSH



= WITH FLANGE



= SELF ADHESIVE

NOTE: Printing errors and omissions may exist despite our best efforts to ensure accuracy. We reserve the right to alter specifications without notice.



## MATERIALS

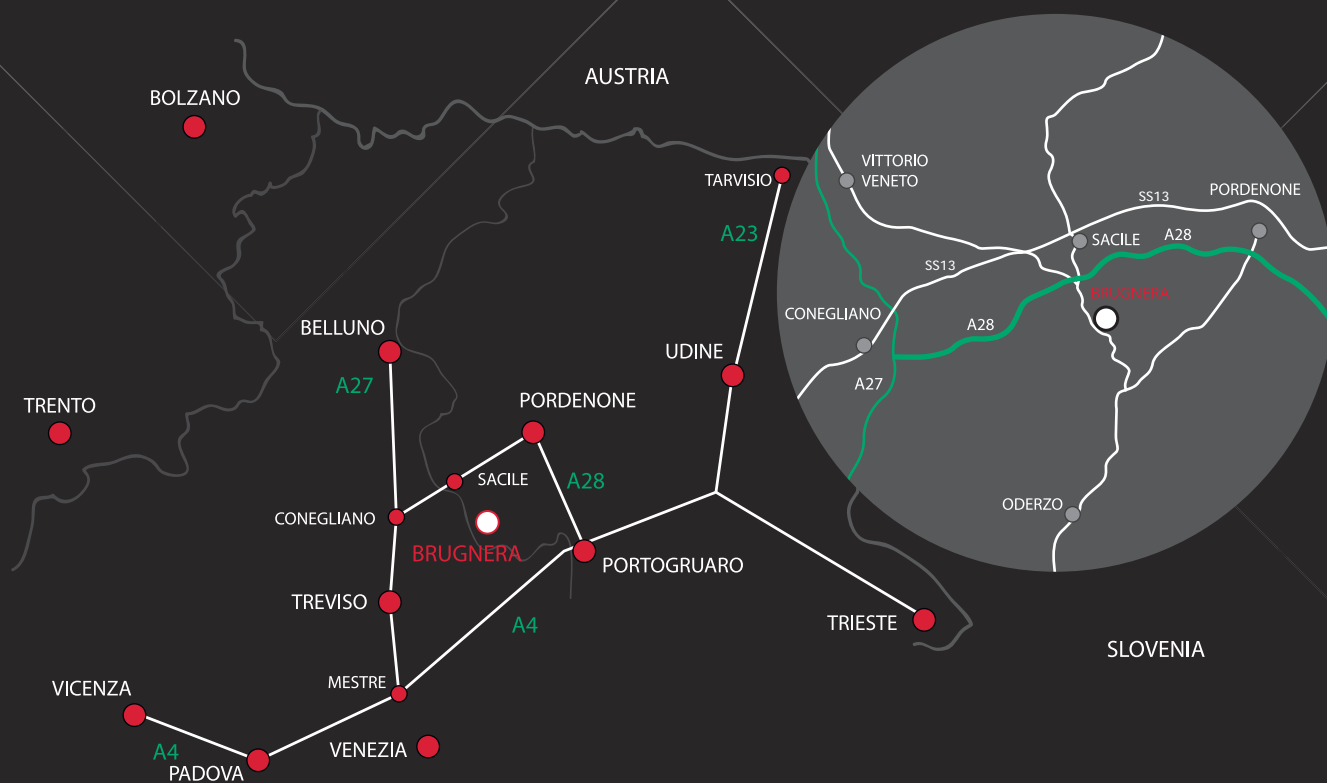
<b>ZA</b> = Zinc Alloy	<b>ST</b> = Steel	<b>HSS</b> = High Speed Steel	<b>BR</b> = Brass	<b>ABS</b> = Acrylonitrile Butadiene Styrene
<b>ZAnk</b> = Nickel-plated Zinc Alloy	<b>STzk</b> = Zinc-plated Steel	<b>AL</b> = Aluminium	<b>WD</b> = Wood	<b>EVA</b> = Ethylene Vinyl Acetate

<b>EP</b> = <b>ENGINEERING PLASTIC</b>	+ <b>EP</b> = other engineering plastic available on request	<b>SR</b> = <b>SOFT RUBBER</b>	+ <b>SR</b> = other soft rubber available on request
--	--	--------------------------------	--

<b>EPn</b> = Natural Engineering Plastic	<b>EPc</b> = Clear Engineering Plastic	<b>SRn</b> = Natural Soft Rubber
<b>EPw</b> = White Engineering Plastic	<b>EPg</b> = Grey Engineering Plastic	<b>SRw</b> = White Soft Rubber
<b>EPb</b> = Black Engineering Plastic	<b>EPa</b> = Anthracite Engineering Plastic	<b>SRb</b> = Black Soft Rubber

 <b>FINISHES</b>	+  = OTHER FINISHES AVAILABLE ON REQUEST
--	---

PART NO.	FINISHES	PART NO.	FINISHES	PART NO.	FINISHES
<b>00</b>	Insignificant finish	<b>IF</b>	Grey 7	<b>XE</b>	Inox
<b>AA</b>	Natural	<b>IJ</b>	Light Grey	<b>YA</b>	Nickel-plated
<b>AB</b>	White	<b>IL</b>	Grey 20	<b>YC</b>	Matt Nickel-plated
<b>AE</b>	White 9010	<b>IN</b>	Grey met. 26	<b>YD</b>	Satin-finished Nickel-plated
<b>EA</b>	Black	<b>JG</b>	Aluminium 5	<b>YQ</b>	Black Nickel
<b>EC</b>	Matt Black	<b>JL</b>	Aluminium PE 11	<b>Z9</b>	Black Zinc
<b>EE</b>	Anthracite	<b>JM</b>	Aluminium RAL 9006	<b>ZN</b>	Zinc-plated
<b>EW</b>	Grey 9007	<b>KB</b>	Bright Chrome	<b>ZQ</b>	Bright Gold
<b>FU</b>	Gunmetal	<b>KC</b>	Matt Chrome	<b>ZZ</b>	Clear/Transparent
<b>FV</b>	Gunmetal V52	<b>LD</b>	Brown 8019		
<b>GR</b>	Zamak Raw	<b>RO</b>	Red		
<b>HA</b>	Brass-Plated	<b>UT</b>	T-Met 9007		
<b>HH</b>	Tropicalized	<b>UZ</b>	T-Met		
<b>HL</b>	Raw Brass	<b>WA</b>	Bronzed		
<b>HX</b>	Graphite	<b>WI</b>	Burnished		
<b>IA</b>	Grey	<b>XD</b>	Satin-finished Steel		



[www.italianaferramenta.com](http://www.italianaferramenta.com)

ITALIANA FERRAMENTA SRL - Viale Europa 17 I - 33070 Brugnara (PN)  
Tel. +39 0434 428211 Fax +39 0434 428242 E-mail: [info@italianaferramenta.it](mailto:info@italianaferramenta.it)